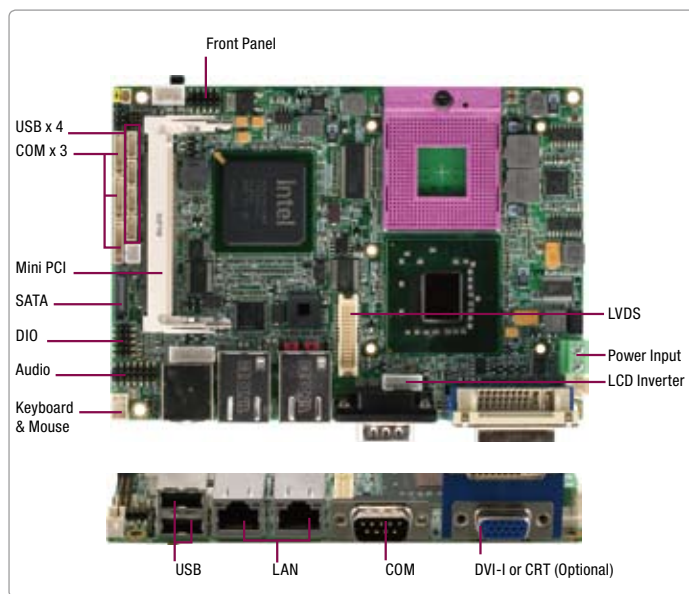


GENE-9655

3.5" SubCompact Board With Intel® Core™ 2 Duo/ Celeron® M (65nm) Processor

03

SubCompact Boards



Features

- Intel® Core™ 2 Duo/ Celeron® M (65nm) Processor Up To 2.2 GHz
- Intel® GME965 + ICH8M
- SODIMM DDR2 533/667, Max. 2 GB
- Gigabit Ethernet x 2, RJ-45 x 2
- DVI-I or CRT (Optional), 18/24-bit Dual-channel LVDS LCD
- 2CH Audio
- SATA 3.0Gb/s x 1 (Optional RAID 0 & 1), CompactFlash™ x 1
- USB2.0 x 6, COM x 4, 8-bit Digital I/O
- Mini PCI x 1, Mini Card x 1
- +12V Only Operation
- Onboard Trusted Platform Module (Optional)

Specifications

System	
Form Factor	3.5"
Processor	Socket-P or onboard Intel® Core™ 2 Duo/ Celeron® M (65nm) processor up to 2.2 GHz, FSB 533/667/800 MHz (Socket-P)
System Memory	200 pin DDR2 SODIMM x 1, Max. 2 GB (DDR2 533/667)
Chipset	Intel® GME965 + ICH8M
I/O Chipset	ITE8781
Ethernet	Intel® 82574L & 82566MM, 10/100/1000Base-TX, RJ-45 x 2
BIOS	Award Plug & Play SPI BIOS - 2 MB Flash
Wake on LAN	Yes
Watchdog Timer	Generates a time-out system reset
H/W Status Monitoring	Supports power supply voltages and temperature monitoring
Expansion Interface	Mini PCI x 1, Mini Card x 1
Trusted Platform Module (TPM)	Infineon SLB 9635 TT 1.2 (Optional)
Battery	Lithium battery
Power Requirement	+12V, AT/ATX
Power Consumption (Typical)	Intel® Core™ 2 Duo T7500 2.2 GHz, DDR2 667 2 GB 4.12A @ +12V
Board Size	5.75"(L) x 4"(W) (146mm x 101.6mm)
Gross Weight	0.88lb (0.4kg)
Operating Temperature	32°F ~ 140°F (0°C ~ 60°C)
Storage Temperature	-40°F ~ 176°F (-40°C ~ 80°C)
Operating Humidity	0% ~ 90% relative humidity, non-condensing
MTBF (Hours)	700,000
Display	
Chipset	Intel® GME965 integrated
Memory	Shared system memory up to 384 MB/DVMT 4.0
Resolutions	Up to 1920 x 1440 for CRT/ Up to 1920x 1200 for LCD
LCD Interface	Up to 24-bit Dual-channel LVDS
DVI	DVI x 1
I/O	
Storage	SATA 3.0Gb/s x 1, Type 2 CompactFlash™ x 1
Serial Port	RS-232 x 3, RS-232/422/485 (auto flow) x 1
USB	USB2.0 x 6
PS/2 Port	Keyboard x 1, Mouse x 1
Digital I/O	Supports 8-bit (Programmable)
Audio	Line-in, Line-out, Mic-in, CD-in



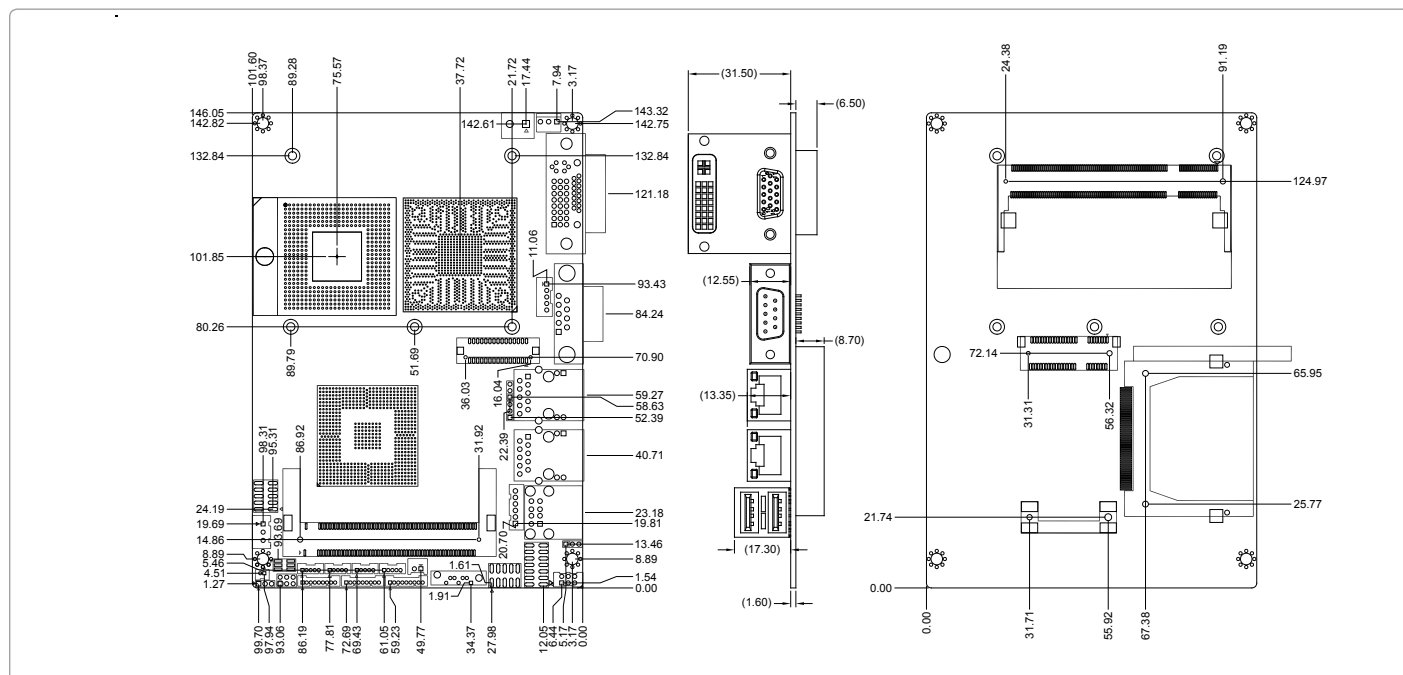
Packing List

- **1700060157**
Keyboard / Mouse Cable
- **1654929900**
DVI-I to VGA Adapter
- **9657666600**
Jumper Cap
- **Cooler**
- **Product CD**
- **GENE-9655**

GENE-9655

Dimension

Unit: mm



Ordering Information

Part Number	CPU	Fan/Fanless	Display	LVDS	Storage	LAN	USB	RS-232	RS-232/422/485	Expansion Slot	Power	Temp
TF-GENE-9655-A10	Socket	FAN	DVI+LVDS	18/24-bit, 2CH	SATA x 1 CompactFlash™ x 1	GbE x 2	6	3	1	Mini Card x 1 Mini PCI x 1	+12V, AT/ATX	0°C ~ 60°C

Optional Accessories

- **1700050207**
USB Cable, Length 20cm
- **1701090150**
COM Port Cable, Length 15cm
- **1709140181**
Audio Cable, Length 18cm
- **1709070500**
SATA Cable, Length 50cm
- **1702002010**
Big Single Row 4-pin Power Input Cable for +12V Input, Length 10cm
- **1702150155**
Power Cable for 2.5" SATA Hard Disk, Length 15cm
- **1700290150**
DVI-I to DVI + VGA Cable, Length 15cm