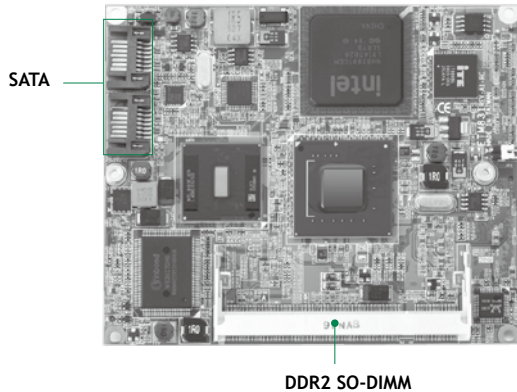


# ETM831

Intel® Atom™ N270 ETX V3.0 SoM with Intel® 945GSE + ICH7M Chipset and Multiple I/O Features



- Atom™ N270
- Intel® 945GSE
- DDR2
- 4 USB 2.0
- HD Audio
- ISA
- 4 PCI

## Features



- Intel® Atom™ processor N270 1.6 GHz with FSB 533 MHz
- Intel® 945GSE + ICH7M chipset
- DDR2-400/533 max. up to 2GB
- 2 SATA-150, 1 PATA-100 supported
- DualView with different content & resolution
- 24-bit single/dual channel LVDS LCD supported
- 4 PCI Bus master, ISA Bus supported
- 5.1 channel audio (optional)

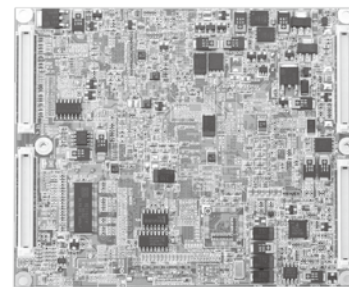
## System

CPU	Intel® Atom™ processor N270 1.6 GHz onboard with FSB 533 MHz
System Memory	1 x 200-pin SO-DIMM supports DDR2-400/533 max up to 2GB
Chipset	Intel® 945GSE + ICH7M
BIOS	AMI
SSD	N/A
Watchdog Timer	255 levels, 1-255 sec.
Expansion Interface	4 x 32-bit PCI bus master 16-bit ISA bus
Battery	N/A
Size	114 x 95 mm
Temperature	0° C - +60° C (32° F - 140° F), operation
Operation Humidity	10% - 95% relative humidity, non-condensing

## I/O

MIO	1 x IDE; PATA-100 IDE 1 x FDD 1 x LPT; with SPP/EPP/ECP supported 1 x PS/2 keyboard 1 x PS/2 mouse 2 x UARTs 1 x IrDA (optional)
SATA	2 x SATA-150; with RAID 0/1 (ETM831VEAR only)
Hardware Monitoring	Detect CPU/system temperature, voltage and fan speed
Ethernet	1 port as 10/100Mbps supports Wake-on-LAN, PXE Boot ROM with Realtek RTL8103EL
Audio	HD Codec audio as MIC-in/Line-in/Line-out with Realtek ALC662
USB	4 x USB 2.0 port
SMBus	System Management Bus for advanced monitoring/control

\* W.T.: Wide Temperature



▲ Rear view

## Display

Chipset	Intel® GMA 950 graphics Core
Memory Size	Intel® DVM T 3.0 compliant
Display Interface	1 x VGA 1 x LVDS; 18/24-bit single/dual channel

## Packing List

Quick installation guide, user's manual/utility CD, cable

## Ordering Information

Standard	
ETM831VEA-N270	ETX 3.0 SoM with Intel® Atom™ processor N270, VGA, LVDS, 10/100Mbps Ethernet, HD audio and 2 UARTs ports
Optional	
5078G831000E	ETM831 heatspreader
5078G830200E	ETM low profile cooling kit without fan

SBC Services and Solutions

System on Modules

Embedded SBCs > EPIC

Embedded SBCs > 3.5" Capa

Embedded SBCs > Pico-ITX

Embedded SBCs > PC/104

Industrial Motherboards

Slot CPU Cards

Accessories

Appendix