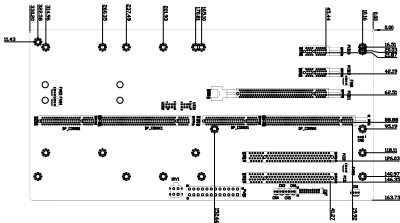


## PE-6S-R20

Mounting holes compatible with PCI-7S

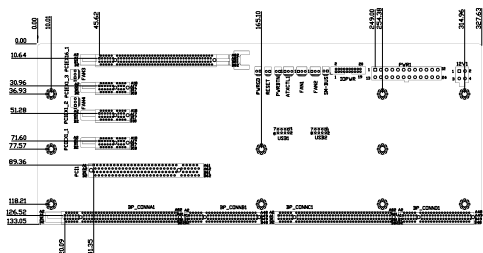


### Ordering Information

PE-6S-R20	PICMG1.3 6 slots backplane with 1 PCIe X16 and 2 PCIe X1 and 2 PCI slots
RACK-305G-R20	4U Rack-mount Industrial Chassis
RACK-360G-R20	4U Rack-mount Industrial Chassis
RACK-814G-R20	4U Rack-mount Industrial Chassis
RACK-3000G-R20	4U Rack-mount Industrial Chassis
PAC-1700G-R20	7 Slot Full Size Industrial Chassis
PAC-125G-R20	10 Slot Full Size Industrial Chassis

## PE-6S3

Mounting holes compatible with PCI-6S



### Ordering Information

PE-6S3-R10	6 Slots Backplane with 1 PCIe x16 and 3 PCIe x1 and 1 PCI slot.
PAC-106G-R20	*1 6 Slots Full Size Industrial Chassis
PAC-107G-R20	*1 6 Slots Full Size Industrial Chassis
PAC-1000G	6 Slots Full Size Industrial Chassis
PACO-506F	6 Slots Full Size Industrial Chassis

\*1: when using a PCIe x16 add-on card, the length of the card must not exceed 167mm or 6.57inches.

## PE-6SD

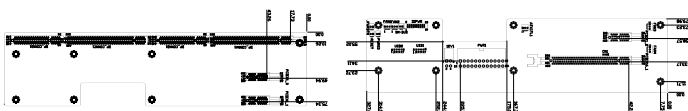
Mounting holes compatible with PCI-6SD

2U Type



Right side

Left side



### Ordering Information

PE-6SD-R10	5 Slots Backplane with 1 PCIe x 16 and 3 PCIe x 1 slot.
RACK-221G	6 Slots Full Size Industrial Chassis
RACK-2100G	6 Slots Full Size Industrial Chassis

## PE-6SD2

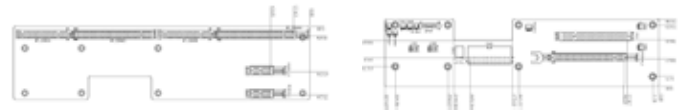
Mounting holes compatible with PCI-6SD

2U Type



Right side

Left side

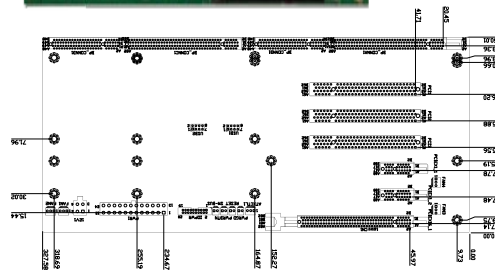


### Ordering Information

PE-6SD2-R10	5 Slots Backplane with 1 PCIe x16 and 2 PCIe x1 and 1 PCI slot.
RACK-221G	6 Slots Full Size Industrial Chassis
RACK-2100G	6 Slots Full Size Industrial Chassis

## PE-7S

Mounting holes compatible with PCI-7S

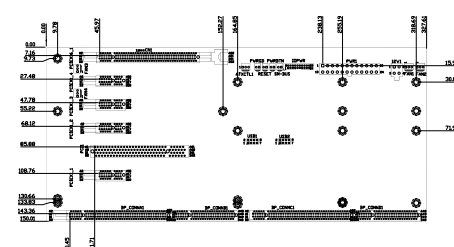


### Ordering Information

PE-7S-R10	7 Slots Backplane with 1 PCIe x 16 and 2 PCIe x1 and 3 PCI slot.
PAC-1700G-R20	7 Slots Full Size Industrial Chassis

## PE-7S2

Mounting holes compatible with PCI-7S



### Ordering Information

PE-7S2-R10	7 Slots Backplane with 1 PCIe x 16 and 4 PCIe x 1 and 1 PCI slot.
PAC-1700G-R20	7 Slots Full Size Industrial Chassis

1

Single Board Computer

2

VIDEO CARD

3

Xscale Solutions

4

Open HMI

5

VITO Universal Controller

6

DINO BLADE

7

LCD Product Series

8

Embedded System

9

Industrial Computer Chassis

10

Power Supply

11

Peripherals