

[Home](#) > [Products](#) > [IPC Panel PC](#)

PPC-17K7L

AMD® Geode LX800 500 MHz Mini ITX Motherboard

SATA

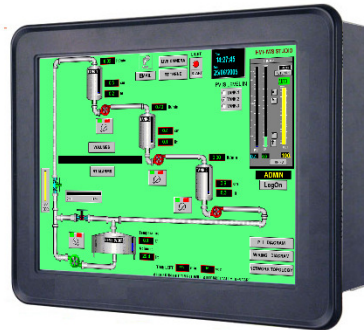
GPIO

Fan
Fanless

Dual View

Dual
Gbit LAN

- Onboard AMD Geode LX800 500 MHz @ 0.9 W with 128K L2 Cache & 64K L1 Cache CPU
- AMD Geode CS5536 Companion Chip
- One DIMM socket supports up to 1 GB DDR 400 SDRAM
- 17" LCD
- Dual View
- Dual Realtek™
- 1 PCI, 1 Mini PCI, Type I/II CF
- 2 COM, 4 USB 2.0
- Realtek ALC203-LF 2 CH Audio



DOWNLOAD



[Product Spec \[PDF\]](#)

[Manual & Drivers](#)

 **ADOBE READER**



[Free Adobe Reader](#)

[Specifications](#)

System	
CPU	▶ Onboard AMD Geode LX800 @ 0.9 W with 128K L2 Cache or 64K L1 Cache
FSB	▶ -
BIOS	▶ Award 4Mb Mb KB FLASH BIOS
System Chipset	▶ AMD Geode LX800/CS5536
I/O Chip	▶ Winbond W83627HG-AW
System Memory	▶ One 184-pin DIMM socket supports up to 1 GB DDR 400 SDRAM
SSD	▶ One CompactFlash Type I/II socket
Watchdog Timer	▶ Reset: 1 sec. to 255 min. and 1 sec. or 1 min./step
H/W Status Monitor	▶ Monitoring temperatures, voltages, and cooling fan status. Auto throttling control when CPU overheats
Expansion	▶ 1 PCI (PCI Rev. 2.3 compliant), 1 Mini PCI-E
S3/S4	▶ S3 only
TPM	▶ -
Wake up on LAN or Ring	▶ -
Display	
Chipset	▶ AMD Geode LX800 with integrated graphics engine
Display Memory	▶ AMD LX800 integrated graphics controller supports up to 32 MB video memory
Dual Display	▶ VGA D-SUB 15Pin Supports up to QXGA (2048 x 1536) LVDS 17" XGA(1280 x 1024)
Touch Screen	▶ 5 Wire resistive touch screen
Audio	
Audio Codec	▶ Realtek ALC203 Supports 2 CH AC97 Audio
Audio Interface	▶ Mic-in, Line-in, Line-out
Ethernet	
LAN 1	▶ Realtek RTL8100C PCI 100/10Mb LAN
LAN 2	▶ Realtek RTL8111C Gigabit LAN
Back Panel I/O Port	
Back Panel I/O Port	▶ 1 PS/2 Keyboard 1 PS/2 Mouse 1 VGA port 2 COM ports 2 RJ45 ports 4 USB 2.0/1.1 Audio I/O (3 jacks) 1 parallel port
Mechanical & Environmental	
Power Type	▶ AC IN 110~240V
Operating Temperature	▶ 0 to 60°C (32 to 140°F)
Operating Humidity	▶ 0% to 90% relative humidity, non-condensing
Size (L x W)	▶ 374.6 (W) x 284 (H) x 68.4 (D) mm
Weight	▶ 8 Kg
Ordering Information	
	•
	•
	•

[<< back](#)

Copyright © 2010 BPS • All rights reserved.