

**MICRO SWITCH**  
 FREEPORT ILLINOIS U S A  
 A DIVISION OF HONEYWELL  
 FED. MFG. CODE 91929

**SWITCH- ENCLOSED**

CATALOG LISTING  
**1EN554-6**

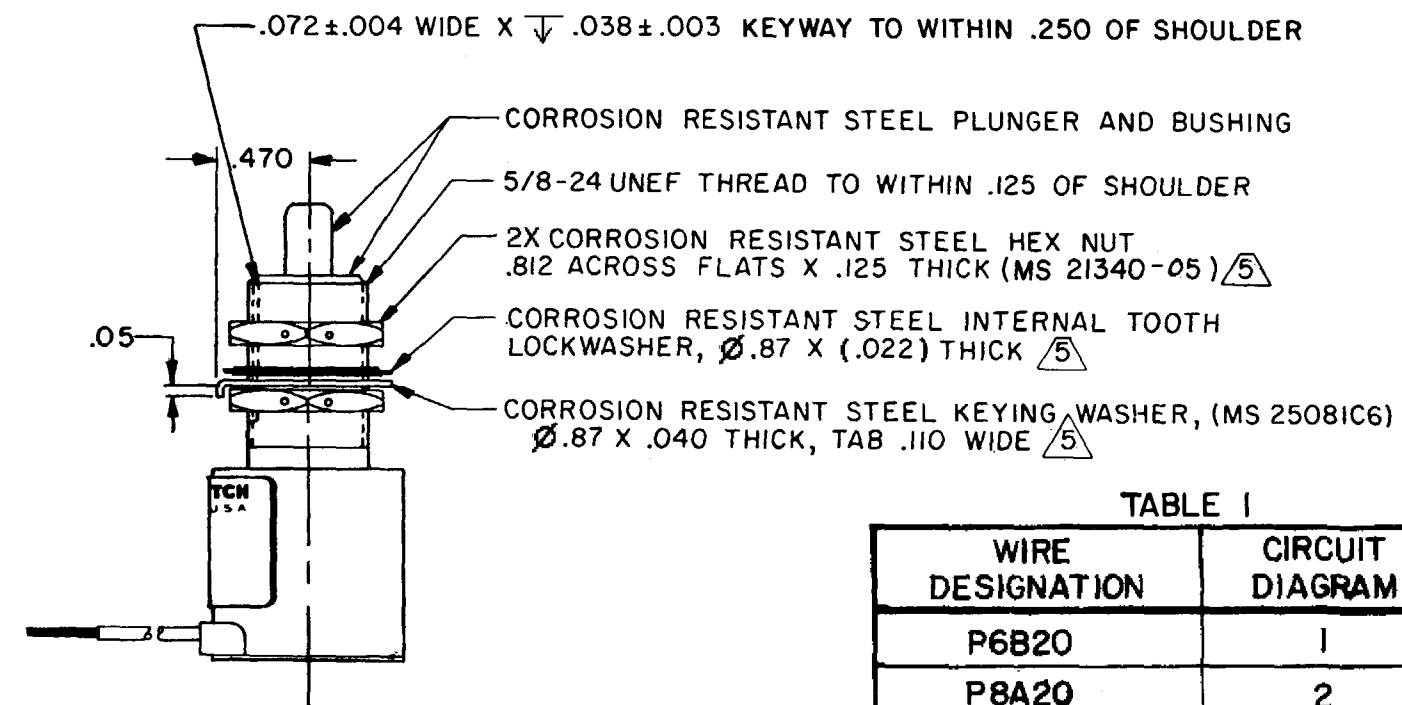
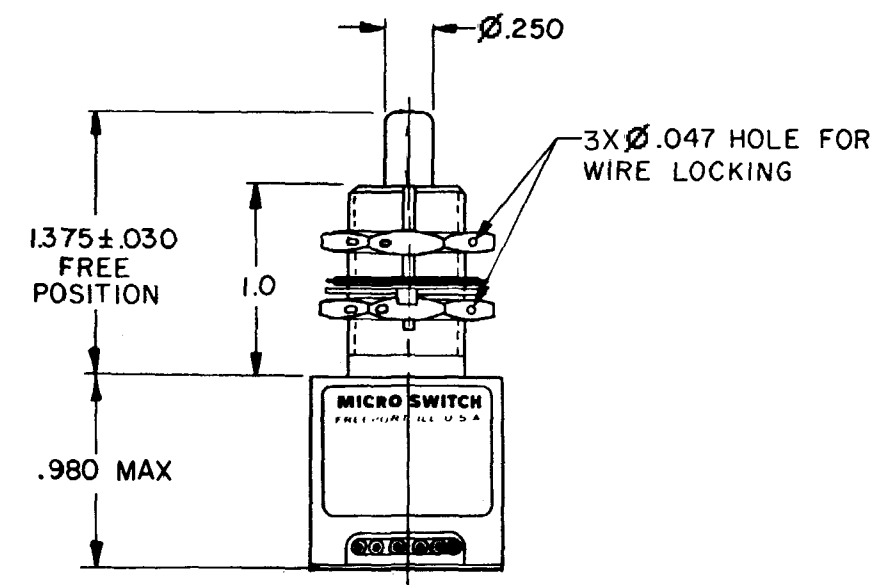
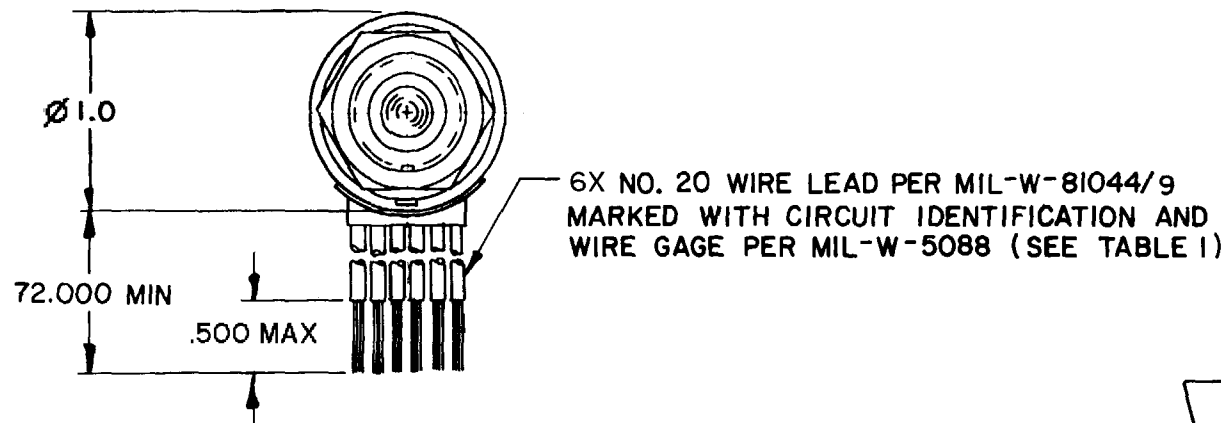
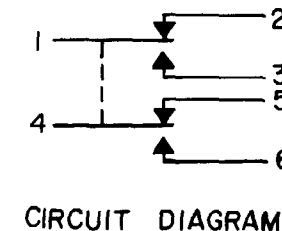


TABLE I

WIRE DESIGNATION	CIRCUIT DIAGRAM
P6B20	1
P8A20	2
E20	3
P7B20	4
P9A20	5
B20	6

NOTES

- CORROSION RESISTANT STEEL ENCLOSURE
  - SWITCH SEALED PER MIL-S-8805 SYMBOL 4
  - CIRCUIT DIAGRAM, DATE CODE, FED. MFG. CODE AND CATALOG LISTING ARE SHOWN ON NAMEPLATE
  - COINCIDENCE OF OPERATING AND RELEASING POINTS: .010 OF PLUNGER TRAVEL
- $\triangle$ 5 HARDWARE MAY BE PACKAGED UNASSEMBLED PER MIL-S-8805

ANSI Y14.5M-1982 APPLIES

THIS DRAWING COVERS A PROPRIETARY ITEM AND IS THE PROPERTY OF MICRO SWITCH, A DIVISION OF HONEYWELL. THIS DRAWING IS NOT TO BE COPIED OR USED WITHOUT THE APPROVAL OF MICRO SWITCH.		THIRD ANGLE PROJECTION	SCALE FULL
DO NOT SCALE PRINT		TOLERANCES	
APPLY TO DESIGN UNITS. CONVERSIONS ARE ONLY FOR REFERENCE UNLESS NOTED TOLERANCES ARE $\pm$		DIM. TOL. DIM. TOL. mm mm/in in mm/in	
NO PLACES $\pm$ 11.04		ONE PLACES .XX 0.41/016 XX 0.81/03	
TWO PLACES .XXX 0.157/008 XXX 0.387/019		THREE PLACES .XXXX 0.131/005	
DESIGN UNITS		SI METRIC <input type="checkbox"/> US CUSTOMARY <input checked="" type="checkbox"/>	
MATERIAL - COMMERCIAL STANDARD MICRO SWITCH STANDARDS APPLY		VERSIONS ARE TO BE MET BEFORE PROTECTIVE COATINGS ARE APPLIED	
WEIGHT 7.5 OZ MAX			

CHARACTERISTICS		ELECTRICAL DATA	
OPERATING FORCE	3-6 LB	CONTACT ARRANGEMENT	
FULL OVERTRAVEL FORCE	17 LB MAX	2X S P D T	
RELEASE FORCE	2 LB MIN	LOAD	
PRETRAVEL	.040 MAX	28 VDC	
DIFFERENTIAL TRAVEL	.020 MAX	SEA LEVEL	50,000 FT.
OVERTRAVEL	.250 MIN	RES	4 4
		IND	2 2
		MOTOR	4

DRAWING NUMBER 1EN554-6  
 PAGE 1 OF 1  
 ISSUE 10  
 REVISIONS  
 A CO44351 WJM JUN 79  
 A CO46329 WJM JULY 79  
 C CO46777 JAF  
 D CO57370 JAF  
 E CO74101 JAF  
 F CO-756688 S A V OCT 93  
 G CO 77504A L J F MAR 94  
 H CO-94005 P P F DEC 98  
 J CO-95351 J J A JULY 99  
 CHECK 22 JUN 79  
 CHECK 14 DEC 98  
 CHECK 27 JUNE 79  
 CHECK 14 DEC 98  
 CHECK 8 JULY 99  
 REPLACES PR-6148  
 FORMTEK FO-2851-A  
 WJM