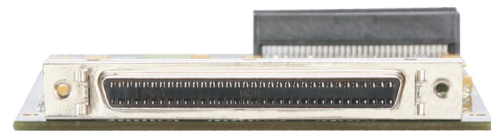
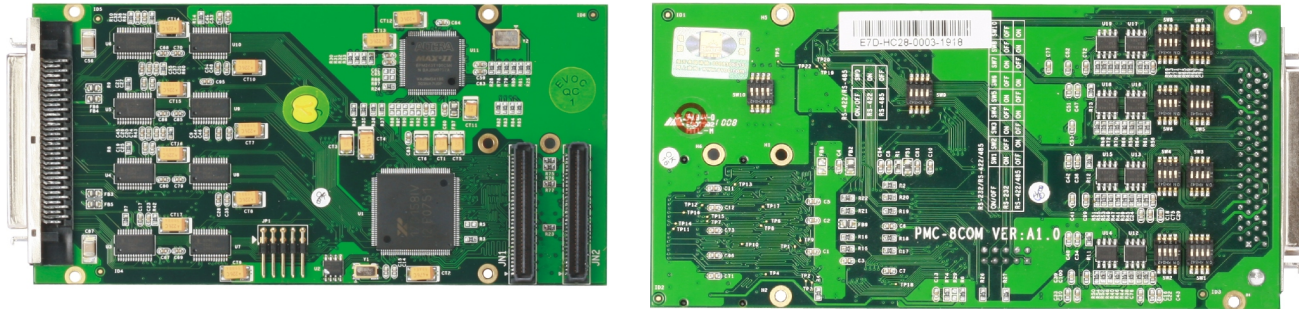


# PMC-8COM

8-channel Serial Port PMC Expansion Module



### Features

- Compliant with 32-bit PMC bus
- PICMG 2.0 R3.0 CompactPCI specification compliant
- PICMG 2.1 R2.0 Hot Swap compliant
- PICMG 2.3 PMC specification compliant
- Supports transfer rate of up to 115.2Kbps
- Supports 4 x RS232 port and 4 x RS-232/422/485 for option by DIP switch

### Specifications

Ethernet	
System bus	32-bit PCI bus
Chipset	
Transfer Rate	Max. 115.2Kbps
Connector	MDR68 to 8 x DB9 Connector
Standard	PICMG 2.0 R3.0, PICMG 2.1 R2.0, PICMG 2.3
Mechanical and Environmental	
Dimensions	149mm x 74mm
Operating Temperature	-40°C ~70°C
Storage Temperature	-45°C ~80°C
Operating Humidity	5%-95%, non-condensing

### Operating System

Windows OS	Windows 2000/ Windows XP
Embedded OS	Linux

### Related Product

Item	Typical Recommendation
CPCI System board	CPC-1712CLD2NA/CPC-1814CLD5NA/CPC-2811VD6N

### Available Accessories

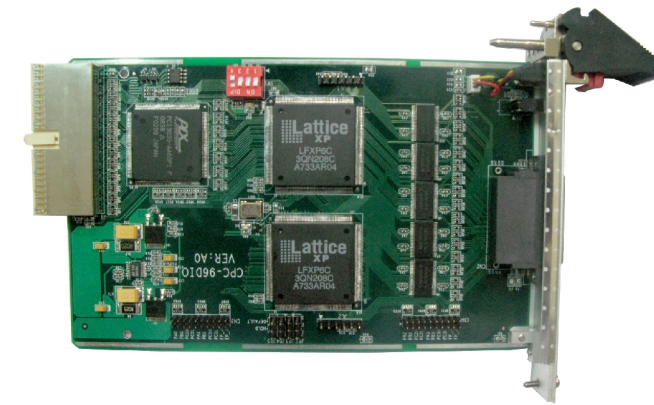
Part Number	Name	Description	Qty.
2192-003321	Driver CD/Protective film/RoHS	PMC-8COM/VER:A1	1
2360-012861	COM cable/ROHS	D-SUB/68P(male) Pitch: 1.27 to 8 DB9(male), Length=550	1
2372-003100	seal ring		1
2391-000201	Screw/RoHS	Pan headM2.5*5/GB-T818-1985/nickel plating/nylon patch	8
2391-006451	Copper hex Screws/RoHS	CH-M2.5-10-NI	2
2391-008001	Location hex Screws/RoHS	M2.5*4*16*8.5φ 2.4mm/screw without threads/please refer to the drawings for details	2
2413-003711	User Manual/Chinese/RoHS	PMC-8COM/VER:A1	1

### Ordering Information

Part Number	Model Number	Description
0090-001240	PMC-8COM	PMC Modules

# CPC-96DIO

96-channel TTL digital input/output 3U CompactPCI Data Acquisition Card



### Features

- Compatible with PICMG2.0 CompactPCI specification and PICMG2.1 Hot Swap specification
- Supports 96-channel TTL digital input/output card setup by software
- Supports up to 6-channel programmable timer/counter, 6-channel PWM output.
- Supports 4-bit board ID setup

### Specifications

Digital Input	
Channel	Up to 96-channel
Electrical Level	Compatible with TTL
Data Throughput	1MB/s
Connect Style	Supports dry contact and wet contact input
Digital Output	
Channel	Up to 96-Channel
Electrical Level	Compatible with TTL
Driver Current	High-level 24mA (max.); low-level 24mA (max.)
Data Throughput	1MB/s
Programmable Timer/Counter	
Channel	6-channel
Counter Type	Count-down
Clock Input Method	Internal input or external input
Max. Input Frequency	20MHz
Interrupt	Each channel can produce interrupt
Electrical Level	TTL compliant
Counter Output Driver	High-level: 24mA (max.); low-level: 24mA (max.)

PWM Output	
Channel	6-channel
Resolution	Step length=1us, error 10 ns; step length=1ms, error 10 ns
High-level Cycle	(1-65535) x step length
Low-level Cycle	(1-65535) x step length
Output Electrical Level	High-level: 4.5~5VDC; low-level: 0~0.55VDC
Output Driver Current	High-level: 24mA (max.); low-level: 24mA (max.)
Mechanical and Environmental	
Dimensions	100mm (3U) x 160mm x 4HP(1 slot width)
Operating Temperature	0°C ~60°C
Storage Temperature	-20°C ~70°C
Operating Humidity	5%~85% RH, non-condensing
Storage Humidity	5%~95%, non-condensing
Power Consumption	Typical +5V @ 470mA; max. +5V @ 500mA
Operating System	
Windows OS	Windows 2000/Windows XP
Embedded OS	Linux

### Related Product

Item	Typical Recommendation
CPCI Chassis	CPC-3408, CPC-3414
CPCI System board	CPC-3641CLD2NA, CPC-3711CL2NA, CPC-3712LD4NA, CPC-3811CLD4NA
Signal Cable	PCL-20268-1M

### Ordering Information

Part Number	Model Number	Description
0060-002990	CPC-96DIO	96-channel TTL digital input/output card, 6-channel programmable timer/counter, 6-channel PWM output.
0060-003070	PCLD-8755	Industrial and terminal board with VHDCI-68 connector
0080-000960	PCL-20268-1M	VHDCI-68 connector to VHDCI-68 connector converter cable, matching PCLD-8755