
Pure PCI Backplanes

(Only Compatible with Half-sized CPU Card)

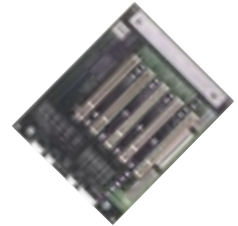
PCA-6104P4-0B1

- Segments: 1
- Slots: 4 PCI
- Size: 110 x 180 mm (4.3" x 7")
- Chassis: IPC-644, MBPC-641
- Ordering Information: PCA-6104P4-0B1



PCA-6105P5-0B1

- Segments: 1
- Slots: 5 PCI
- Size: 143 x 155 mm (5.6" x 6")
- Chassis: IPC-6806, IPC-6606, IPC-6006
- Ordering Information: PCA-6105P5-0B1



PCA-6108P8-0A1

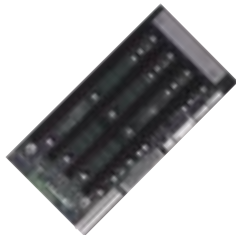
- Segments: 1
- Slots: 8 PCI
- Size: 182 x 185 mm (7.2" x 7.3")
- Chassis: IPC-6908, IPC-6608
- Ordering Information: PCA-6108P8-0A1



4-slot ISA Backplanes

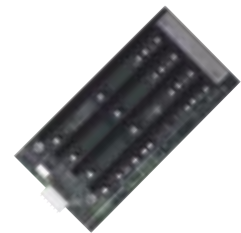
PCA-6104-0C1

- Segments: 1
- Slots: 4 ISA
- Size: 94.7 x 186 mm (3.7" x 7.3")
- Chassis: IPC-644, MBPC-641
- Ordering Information: PCA-6104-0C1



PCA-6104-1C1

- Segments: 1
- Slots: 4 ISA
- Size: 94.7 x 186 mm (3.7" x 7.3")
- Chassis: IPC-644
- Ordering Information: 969K610410



PCA-6104-3C1

- Segments: 1
- Slots: 4 ISA
- Size: 94.7 x 186 mm (3.7" x 7.3")
- Chassis: MBPC-641
- Ordering Information: 969K610430

