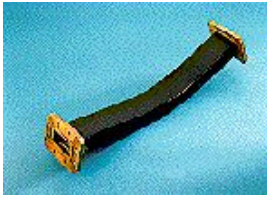


# Product Specifications

POWERED BY



F137CCB3

**FlexTwist™ Flexible Twist for WR137, 6.425–7.125 GHz, with interface types CPR137G and CPR137G, 900 mm**

## Electrical Specifications

Operating Frequency Band	6.425 – 7.125 GHz
Attenuation	0.09 db/ft   0.30 db/m
Average Power	2000 W
Peak Power	500.0 kW
VSWR	1.03

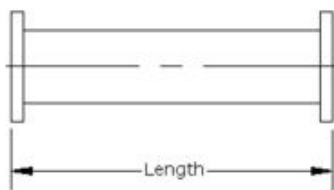
## General Specifications

Component	Flexible Twist
Waveguide Size	WR137   WG14   R70
Interface	CPR137G
Interface 2	CPR137G
Length	900 mm   35 in

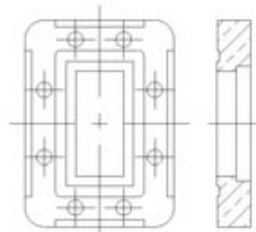
## Mechanical Specifications

Maximum Twist	214.00 °/m   65.00 °/ft
Minimum Bend Radius, Multiple Bends (E Plane)	102.00 mm   4.00 in
Minimum Bend Radius, Multiple Bends (H Plane)	204.00 mm   8.00 in
Pressurization, maximum	30 psi   205 kPa

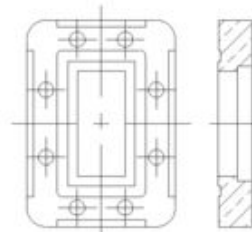
### Component



### Interface



### Interface 2



## Regulatory Compliance/Certifications

### Agency

RoHS 2011/65/EU  
China RoHS SJ/T 11364-2006  
ISO 9001:2008

### Classification

Compliant by Exemption  
Above Maximum Concentration Value (MCV)  
Designed, manufactured and/or distributed under this quality management system