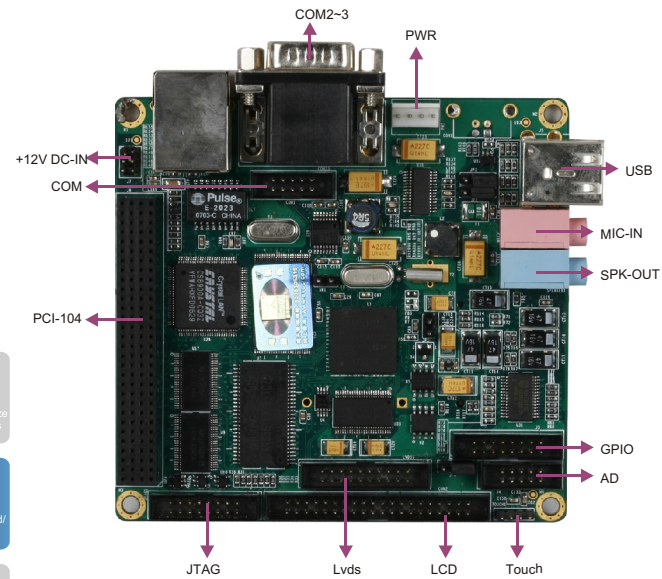
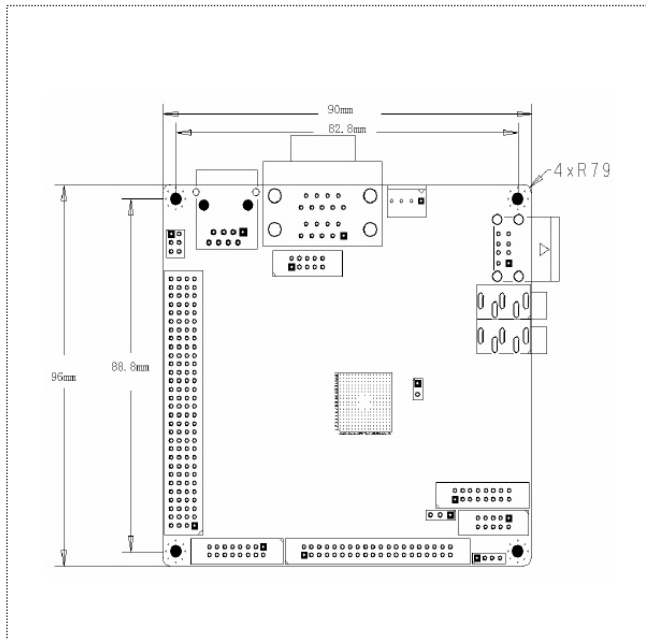


104-5021

ARM9 PC/104 SBC with CPU/Memory and FLASH/SD/LAN/Audio/COM



Dimensions



Features

- 64M NAND Flash, 64MB SDRAM
- 3 x serial port (2 ports are 2-line spec.)
- 4-channel touch screen port (resistance)

I/O Interface

Serial Port	3 x serial port (2 ports are 2-line spec.)
USB Port	2 x USB2.0
Touch Screen Port	4-channel touch screen port (resistance)
Digital I/O	8 x GPIO
Timer	Supports RTC function
Operating system	Supports Linux
Power Supply	DC12V power supply
Dimensions	96mm x 90mm
Operating Temperature	0°C~60°C
Operating Humidity	5%~95%

Specifications

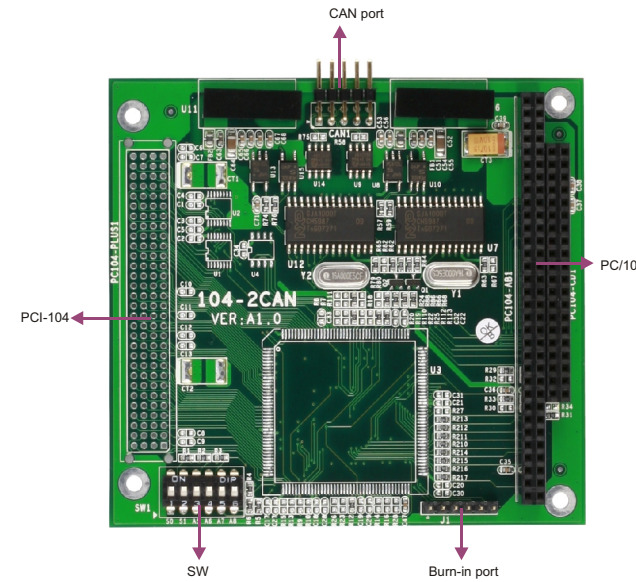
Product Type	PCI-104 SBC
Processor	S3C2410, ARM920T, 206MHz
System Flash	64M NAND Flash
Memory	64MB SDRAM
Onboard Video	TFT-LCD interface
Network	10M Ethernet controller
Audio	SPK-OUT, MIC-IN
Flash Storage	SD socket

Ordering Information

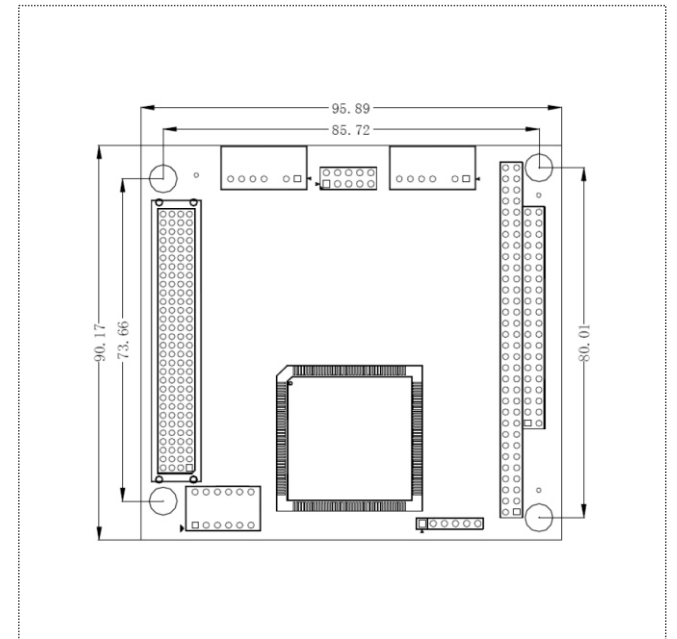
Part Number	Model Number	Description
0030-008350	104-5021	ARM Motherboard
0030-008340	104-5021	ARM Motherboard/branch company
0030-011120	104-5021	ARM Motherboard/branch company

104-2CAN

PC/104-Plus standard 2-channel CAN card



Dimensions



Features

- 2 x opto-isolated CAN port
- PC/104 Bus expansion bus
- PC/104 Bus power supply

Specifications and Features

NXP SJA1000T chip; PC/104-Plus standard 2-channel CAN connector card. Integrates two independent CAN channels. Each CAN channel has opto-isolation

Architecture	PC/104-Plus standard structure
Chipset	NXP SJA1000T chip
Channel	2-channel independent opto-isolated CAN channel
CAN Protocol	CAN 2.0B and CAN 2.0AISO/DIS11898 specifications compliant
Baud Rate	5Kbps~1Mbps
CAN Port	Jumper 2 x 5 DeviceNET and CANopen protocol standard compliant
CAN Bus Isolated	2500 VDC
Max. Frame Flow	2000 frame/sec. for each channel
Data Buffer Area Volume	Software sending buffer: 16 frames; software receiving buffer: 100,000 frames
Operating Temperature	-40°C~85°C
Operating Humidity	5%~95% RH, non-condensing
Dimensions	90mm x 96mm

Ordering Information

Part Number	Model Number	Description
0090-000070	104-2CAN	PC104-plus dual-port CAN card

1 Full-Size/Half-Size Slot CPU Cards

2 SBC/Motherboard/Modules

3 Embedded Box PC

4 Network Application Computers

5 Industrial PC

6 HMI

7 EVOG Rugged Series

8 MCC Series

9 Chassis

10 Data Acquisition Boards & Modules

11 Accessories

1 Full-Size/Half-Size Slot CPU Cards

2 SBC/Motherboard/Modules

3 Embedded Box PC

4 Network Application Computers

5 Industrial PC

6 HMI

7 EVOG Rugged Series

8 MCC Series

9 Chassis

10 Data Acquisition Boards & Modules

11 Accessories